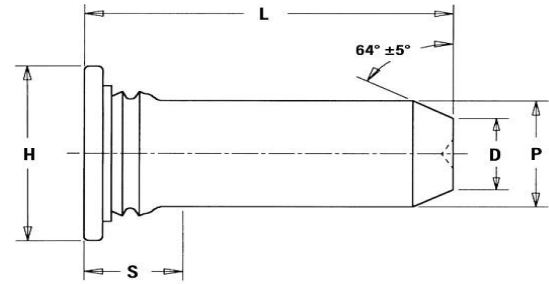




7019386466

WITRUS PRIVATE LIMITED

#06 Andrahalli Main Road Peenya 2nd Stage Vishwaneedam Post
Bangalore - 560091



W16PS2

SS 304

SELF CLINCHING PILOT PINS TPS(For use in Steel Sheets Max HRB 70)

Size P $\pm 0.06 \rightarrow$	3	4	5	6
H ± 0.45	5.20	6.15	7.20	8.15
S max	2.29	2.29	2.29	2.29
D ± 0.18	2.11	2.82	3.53	4.24
Hole size in sheet $+0.08$	3.50	4.50	5.50	6.50
Min sheet thickness	1.00	1.00	1.00	1.00
Hole centre to edge min	6.40	7.10	7.60	7.90

Quote the item code given below with your order/ inquiries:

Dimensions in mm

Length $\pm 0.45 \downarrow$	3	4	5	6
6	W16PS203006	W16PS204006	W16PS205006	W16PS206006
8	W16PS203008	W16PS204008	W16PS205008	W16PS206008
10	W16PS203010	W16PS204010	W16PS205010	W16PS206010
12	W16PS203012	W16PS204012	W16PS205012	W16PS206012
16	W16PS203016	W16PS204016	W16PS205016	W16PS206016
20	W16PS203020	W16PS204020	W16PS205020	W16PS206020
25	W16PS203025	W16PS204025	W16PS205025	W16PS206025

Sizes in BLUE are non-preferred. Availability is limited and MOQ higher.

Data is strictly informative

Note: All Austenitic Stainless Steel Fasteners may exhibit some magnetic properties due to the manufacturing process.

Refer: ISO 3506-2 Annex F

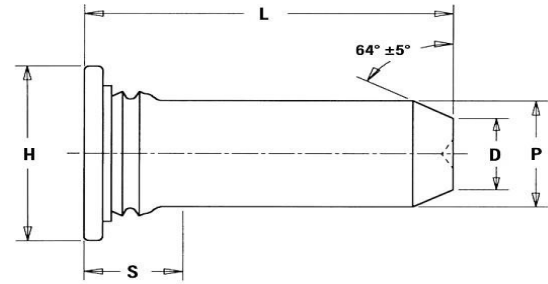


WITRUS PRIVATE LIMITED

#06 Andrahalli Main Road Peenya 2nd Stage Vishwaneedam Post
Bangalore - 560091

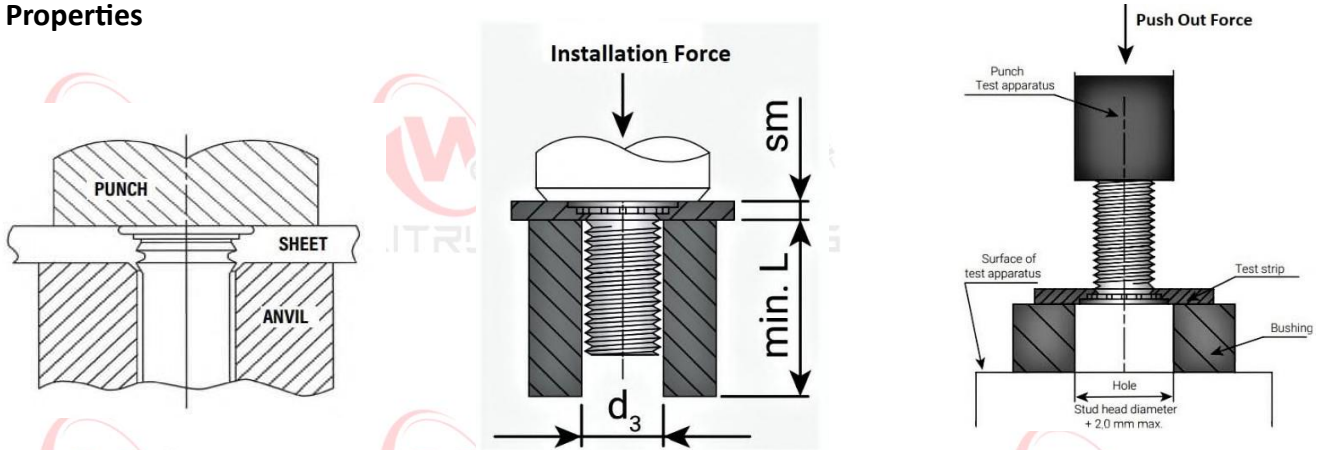
W16PS2

SS 304



SELF CLINCHING PILOT PINS TPS(For use in Steel Sheets Max HRB 70)

Mechanical Properties



Test Sheet Thickness & Material

AL - Aluminium 1.6 mm 29 HRB

ST - Steel 1.5 mm 59 HRB

Size →	3	4	5	6	Test Sheet
Nut tightening torque Max Nm	0.41	0.74	1.15	1.70	
Press-in Force (Installation) kN	12.00	22.00	28.00	30.00	Aluminium
	22.00	26.00	35.00	39.00	Steel
Push-out Force kN	0.52	0.85	0.98	10.00	Aluminium
	0.92	1.50	1.70	20.00	Steel
Torsional Strength Nm	1.00	1.70	1.70	2.90	Aluminium
			2.80	4.20	Steel
Pull thru resistance N	2600	3150	3780	4440	Aluminium
	2800	3840		5650	Steel

Note: All Austenitic Stainless Steel Fasteners may exhibit some magnetic properties due to the manufacturing process.

Refer: ISO 3506-2 Annex F